



The PMI Advanced  
**Automated Burst  
Pressure Tester**

**ABPT-15K-A-1SC (1000 Bar Pressure Range)**

**Not just products...solutions!**

# DESCRIPTION

The PMI Automated Advanced Burst Pressure Tester features a pneumatically controlled piston to hold the sample in place supported by a flexible rubber bladder. The bladder is pushed by a liquid whose pressure and pressurization rate is precisely controlled by a computer controlled pressurization routine. Any pressurization routine can be programmed and stored. The pressure is recorded on a millisecond scale and the burst pressure is determined by the highest pressure achieved before the pressure drop due to sudden expansion of the bladder.

# PRINCIPLE

Air is introduced into the system at controlled rate required by the required pressurization profile. Rate of pressurization (F/PT) is plotted and the slope of this curve is monitored and displayed. Burst pressure is the pressure at which the change in the slope of this curve is greater than the user defined value for the sample being tested.

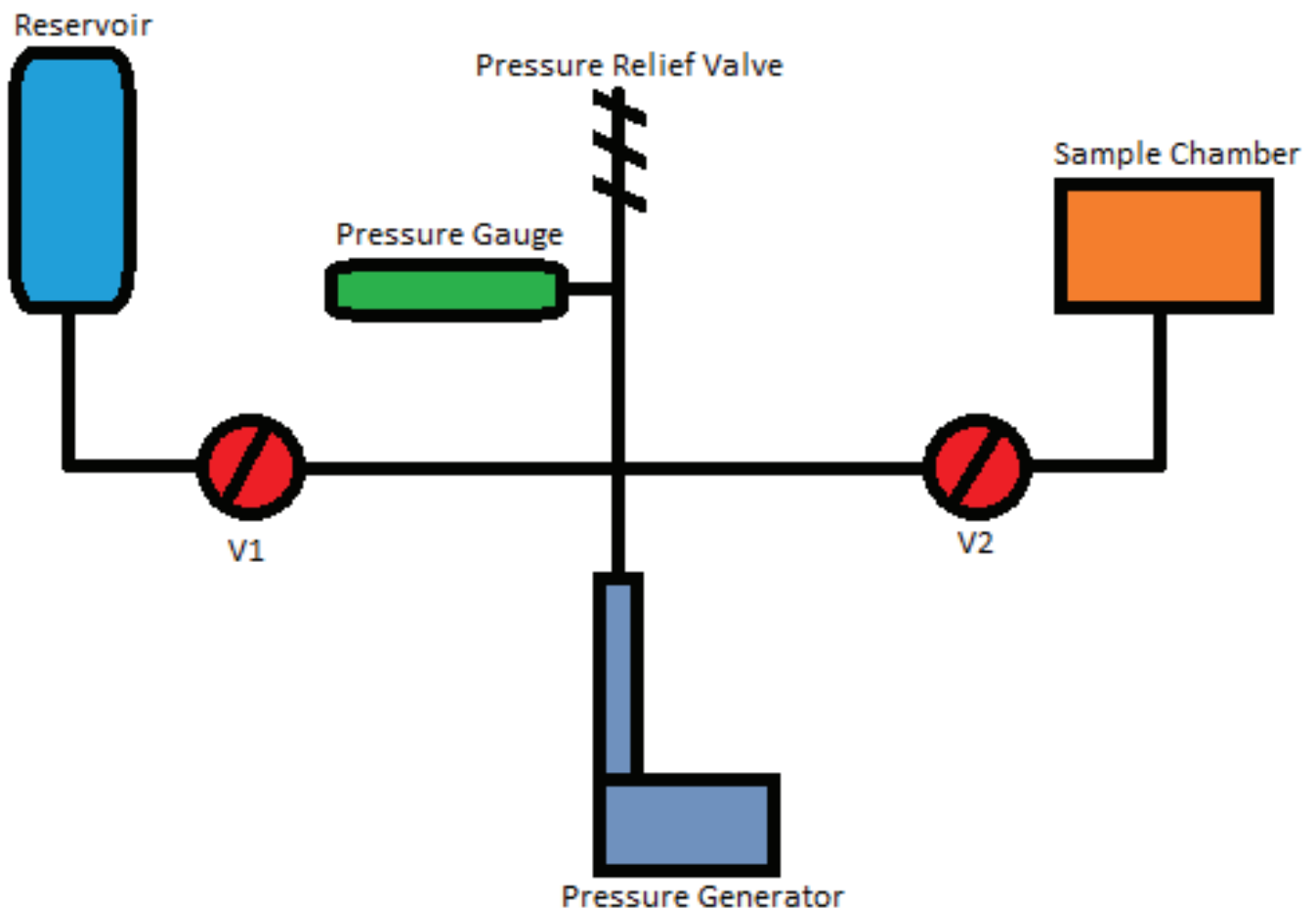


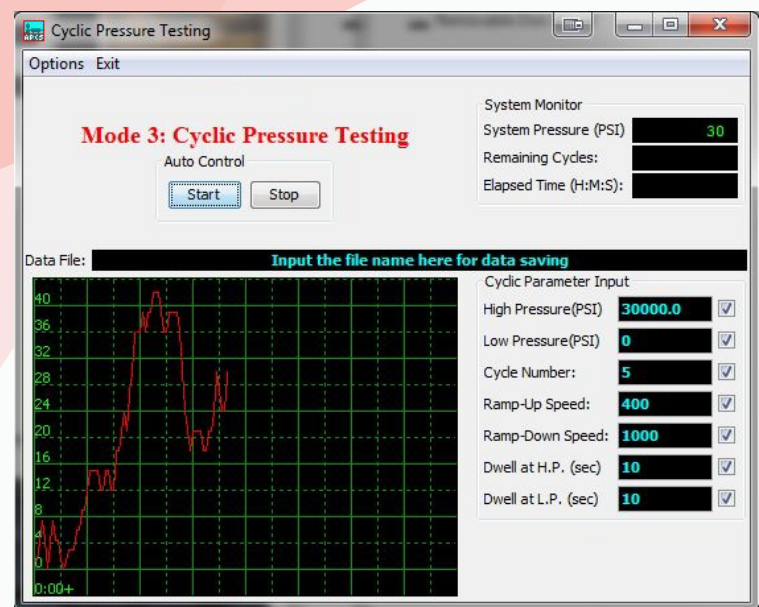
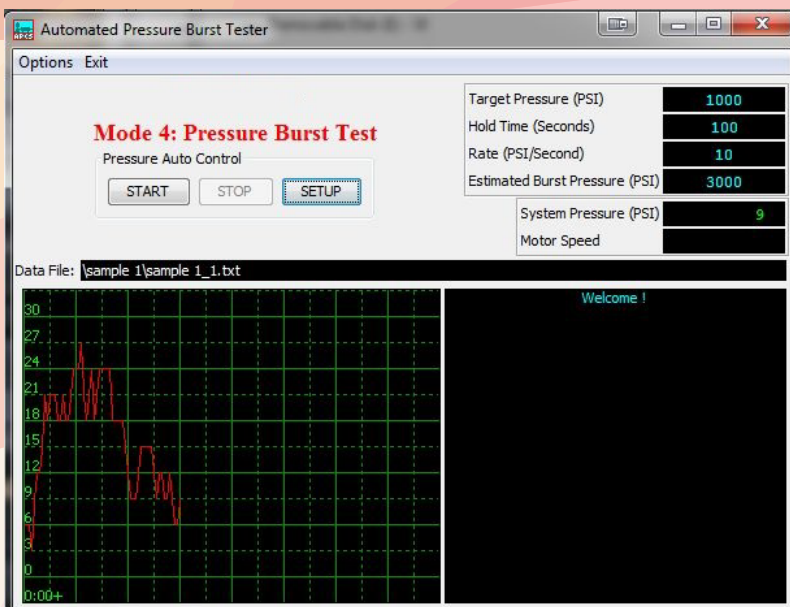
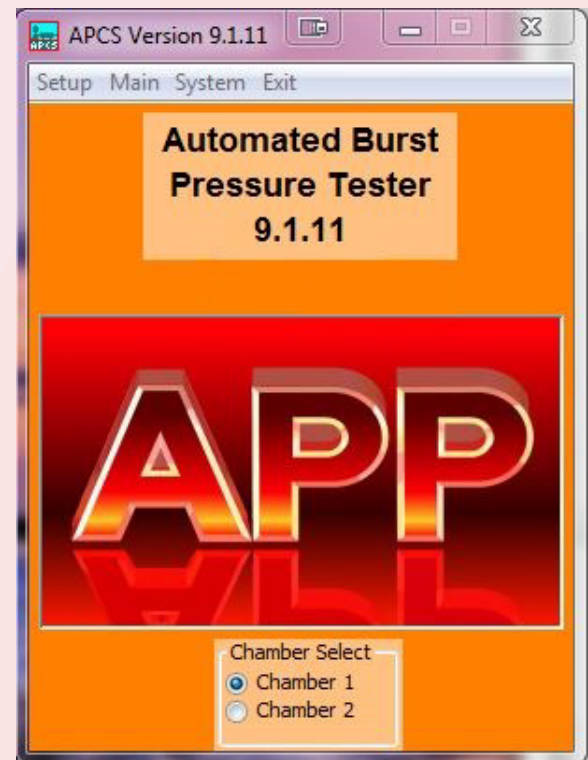
Figure 1  
Outline of permeability testing setup

# APPLICATION

Burst strength of paper and corrugated board & also applicable in textile industry, non-woven.

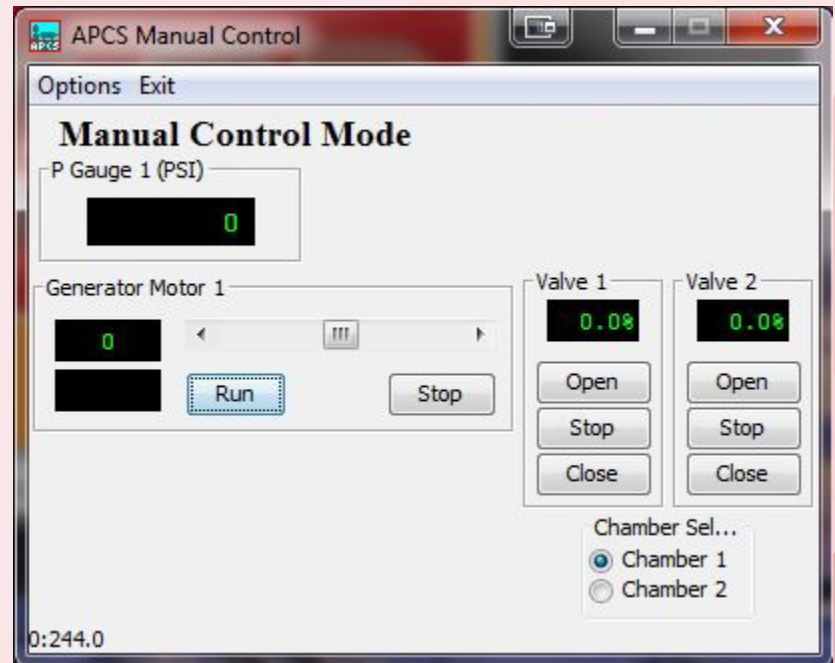
# FEATURES

- 1 Sample Chamber System
- 0.1% Pressure Transducer
- Instrument recognizes sample placement and automatically starts test
- Test criteria can be specified for different kind of samples
- Fast, reproducible and accurate testing
- Supervisor, user and Q/C modes to provide different levels of security
- Data logging and pass/fail display on the monitor
- Air pressure generator included, no compressed air system required
- User selectable units and languages
- Statistical data analysis
- Screen, print, text and excel reports allow use of data by other programs to generate special reports



# SPECIFICATION

- Pressure Transducer Accuracy: 0.1%
- Pressure Range: 0-15,000 psi (1000 Bar)
- Accuracy: up to 0.1% FS
- 100 CC. Volume for pressure pump
- Air operated fill pump reduces test time



# SALES & SERVICES

Our sales team is dedicated to helping our customers find which machine is right for their situation. We also offer custom machines for customers with unique needs. To find out what we can do for you, contact us.

We are committed to customer support including specific service products, short response times & customer specific solutions. To quickly & flexibly meet our customer's requirement, we offer a comprehensive range of services.



Customize your machine today!

**Disclaimer** : Other specifications of this product are also available.  
Design subject to change without notice.

The most advanced, accurate, easy to use and reproducible Burst Pressure Tester in the world.



20 Dutch Mill Rd, Ithaca, NY 14850, USA  
Toll Free (US & Canada): 1-800-TALK-PMI (1-800-825-5764)  
Phone: 607-257-5544 Fax: 607-257-5639

Email: [info@pmiapp.com](mailto:info@pmiapp.com)

[www.pmiapp.com](http://www.pmiapp.com)

